



**PRODUCT RANGE**  
**2022**

**DRUM & IBC**  
**JACKETS**  
**HEATERS**  
**COVERS**

# DRUM HEATING JACKETS

A Drum heating jacket is the perfect solution when it comes to quickly and effectively heating up fluids and materials making them very easy to empty out with minimal to no waste product. They are also useful for protection from UV radiation.

The drum jackets are equipped with easy to use digital controllers, with various heating ranges from 0°C to 200°C (32°F up to 392°F) or fixed bi-metal thermostats.

The jackets are made from durable and long lasting high quality lightweight design and the construction combined with quick release buckles makes the jackets easy to attach to any standard sized drum.

Warm-up duration approx. 24h for 200 liters of water from 20°C to 82°C (+68°F to +180°F) using a 1200W drum heating jacket.

## Ideal for heating up:

- Water.
- Oils and diesel fuel.
- Resin.
- Vaseline.
- Wax, e.g. lanolin (wool wax or wool grease).
- Fats.
- Butters e.g. Ghee.

All shown products are for 200L drums. See our price list for other drum sizes and options.



110V 1200W: 11-9858A  
230V 1200W: 11-9858

## Standard Drum Heating Jacket (0-90°C)

- Digital controller 0-90°C (32-194°F).
- Polyester fabric jacket.
- 6mm fiber glass insulation.
- Silicone insulated spiral wound resistance element.
- Internal heat fuse (167°C).
- Adjustable quick release buckles.
- 3 meter (10 feet) power cable.
- IP40 rated (option for IP54).
- Top lid sold separately (Black lid for 200L drum: 15-1921).



110V 1200W: 11-9870A  
230V 1200W: 11-9870

## High temperature Drum Heating Jacket (0-200°C)

- Digital controller 0-200°C (32-392°F).
- Silicone impregnated fiber glass jacket.
- 6mm fiber glass insulation.
- Silicone insulated spiral wound resistance element.
- Internal heat fuse (225°C).
- Adjustable quick release buckles.
- 3 meter (10 feet) power cable.
- IP40 rated (option for IP54).
- Top lid sold separately (Silver lid for 200L drum: 15-1921A).



1 zone - 230V 1200W: 19-2746  
2 zones - 230V 2x600W: 12-1208DT

## Foodstuff Drum Heating Jacket (0-120°C)

- Designed for food and pharmaceutical industries.
- 1 or 2 zones with full area coverage.
- Digital controller(s) 0-120°C (32-248°F).
- Silicone impregnated fiber glass jacket (FDA approved for use with food).
- IP54 rated.
- Other options and internal construction as HT Drum Heating Jackets.
- Top lid sold separately (White lid for 200L drum: 15-1921F).

# OTHER DRUM HEATERS

Besides our Heating Jackets we have several other high quality heating solutions for drum heating.

The silicone heating bands are high power compared to heating jackets, but without the insulation.

The base heaters are easy to use with high power and can be combined with the other heating or insulation products from our range for faster heatup times and better temperature stability.

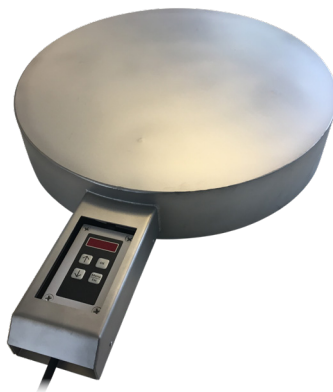
All shown products are for 200L drums. See our price list for other drum sizes and options.



230V 1000W: 11-9867

## Silicone Drum Heating Band (0-120°C)

- Designed in durable silicone materials.
- Simple design for easy usage.
- Thermostat with range from 0-120°C (32 - 248°F).
- Mount up to 3 heaters on one drum.
- 3 meter (10 feet) power cable.
- Also available for 25, 50, and 105 liter drums.
- Can be combined with Base Drum Heater.



110V 900W: 11-9868A  
230V 900W: 11-9868

## Base Drum Heater (0-120°C)

- Digital controller 0-120°C (32-248°F).
- Easy installation. Just place the drum on the drum heater and start heating the content.
- Size: Ø: 555mm / H: 105mm.
- Weight: 15 kg.
- 2 meter power cord.
- Can be combined with other heating or insulation products from our range.



110V 1800W: 12-1170A  
230V 1800W: 12-1170

## High Temp. Base Drum Heater (50-300°C)

- Adjustable thermostat 50-300°C (122- 572°F).
- Easy installation. Just place the drum on the drum heater and start heating the content.
- Size: Ø: 555mm / H: 105mm.
- Weight: 15 kg.
- 3 meter power cord.
- Can be combined with other heating or insulation products from our range.

# DRUM COVERS & INSULATION JACKETS

Drum insulation jackets are designed to insulate and maintaining temperature inside a drum barrel.

The insulation jackets and covers can be used in conjunction with a Base Drum Heater to speed up the heating process and to slow down the cooling proces, after the heater is unplugged.

Our insulation jackets and covers are made from durable materials and are easy to install.

## Ideal for:

- Maintaining temperature inside a drum.
- Speeding up the heating process.
- Extra drum protection.
- Safe drum transportation.

All shown products are for 200L drums. See our price list for other drum sizes and options.



16-2105

## Drum Lid with access holes

- Alternative to standard lid.
- Access holes for easy access to drum openings.
- Cordura material with Teflon coating.
- Water repellent.
- Chemical resistant.



17-2221

## Drum PVC Cover

- Waterproff.
- Clear window for drum identification.
- Made from PVC.
- Can be combined with a Base Drum Heater.



11-9862

## Drum Insulation Cover

- Opens in the top for access to drum.
- Opens in the side for easy installation.
- Insulated.
- Size: Ø:589 / H:860mm
- Can be combined with a Base Drum Heater.



Jacket: 17-2330  
Lid: 15-1921

## Drum Insulation Jacket

- Polyester fabric jacket.
- 6mm fiber glass insulation.
- Adjustable quick release buckles.
- Top lid sold separately.
- Can be combined with a Base Drum Heater.

# IBC HEATING JACKETS

An IBC heating jacket is the perfect solution when it comes to quickly and effectively heating up fluids and materials making them very easy to empty out with minimal to no waste product. They are also useful for protection from UV radiation.

The IBC jackets come with up to 3 zone digital controllers, adjustable from 0-40°C or 0-90°C, making the jackets very fast and safe to heat liquids and maintaining the wanted viscosity for the content in the container.

The jackets are made from durable and long lasting high quality lightweight design and the construction combined with quick release buckles makes the jackets easy to attach to any standard 1000L container.

The foodstuff container jackets are made especially for food and pharmaceutical industries.

## Ideal for heating up:

- Water.
- Oils and diesel fuel.
- Resin.
- Vaseline.
- Wax, e.g. lanolin (wool wax or wool grease).
- Fats.
- Butters e.g. Ghee.

All shown products are for 1000L IBCs. See our price list for other sizes and options.



**1 Zone (0-40°C)**  
1300W  
230V: 11-9860A

**2 Zone (0-90°C)**  
2x1000W  
230V: 11-9860

**3 Zone (0-90°C)**  
3x1000W  
230V: 11-9861B

## IBC Heating Jackets

- 1-3 zones with full area coverage and DigiTherm digital controllers:
  - 1 zone 0-40°C - 1300W.
  - 2 or 3 zones 0-90°C - 1000W per zone.
- Polyester and fiber glass fabrics.
- 6mm fiber glass insulation.
- Silicone insulated spiral wound resistance element.
- Internal heat fuse (167°C).
- 3 meter power cable with w/o prong.
- Class IP40.
- Adjustable quick release buckles.
- Warm-up - heater & lid - 1000L drum with water from +15°C to +30°C:
  - 1 zone ~72 hours.
  - 2 zones ~20 hours.
  - 3 zones ~6 hours.
- Top lid sold separately (Black insulating lid: 11-9861D).



**1 Zone 0-40°C**  
1300W  
230V: 20-2798



**2 Zone 0-90°C**  
2x1000W  
230V: 20-2797

## IBC Heating Jackets for foodstuff

- 1 or 2 zones with full area coverage and DigiTherm digital controllers:
  - 1 zone 0-40°C - 1300W.
  - 2 zones 0-90°C - 1000W per zone.
- Silicone impregnated fiber glass fabrics (FDA approved for use with food).
- 6mm fiber glass insulation.
- Silicone insulated spiral wound resistance element.
- Internal heat fuse (167°C).
- 3 meter power cable with w/o prong.
- Class IP54.
- Adjustable quick release buckles.
- Warm-up - heater & lid - 1000L drum with water from +15°C to +30°C:
  - 1 zone ~72 hours.
  - 2 zones ~20 hours.
- Top lid sold separately (White foodstuff insulating lid: 20-2799).

# OTHER IBC HEATERS

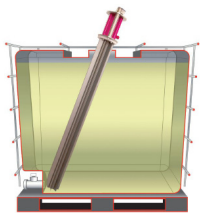
Besides our Heating Jackets we have several other high quality heating solutions for IBCs.

The Internal IBC Heater is put directly into the liquid inside the IBC and has an internal thermodynamic core that insures uniform temperature across the surface of the heating element.

The IBC Base Heater is put under the IBC tank and can be adjusted all the way up to 150°C. The heating element itself is water proff and will work well outside, regardless of the weather, as long as the plug and the controller is protected from direct rain (The heating element is IP64 rated and the controller is IP54 rated).

Both the Internal IBC Heater and the IBC Base Heater can be combined with each other, heating or insulating jackets, insulating lids, and/or covers for faster heatup times and better temperature stability.

All shown products are for 1000L IBCs. See our price list for other sizes and options.



**Internal IBC Heater**  
230V 2400W  
0-90°C: 20-2904a



**Cleaning Tube for Internal IBC Heater**  
20-2904c



**IBC Base Heater (0-150°C)**  
2700W  
230V: 13-1436S

## Internal IBC Heater

- Designed for insertion into 1000 litre cubic IBC but will fit inside most IBC configurations.
- Adjustable temperature target from 0-90°C.
- Finned, food safe heating element that is inserted into the IBC.
- Unique thermodynamic core that gives even temperature distribution along the heating extrusion, preventing thermal damage to the IBC contents.
- Carefully designed low Watt density to protect sensitive products.
- Non-stick industrial strength Xylon coating for easy washdown.
- Environment:
  - -10 - 40°C.
  - IP67-rated body with potentiometer control mounted under protective see-through cover.
- Long life heating elements.
- 16 Amp blue industrial power plug.
- Combine with heating jacket or insulating cover and lid for optimal effect.
- Optional Cleaning Tube for easy cleaning (Item#: 20-2904c).

## IBC Base Heaters (incl. DigiTherm controller)

- Powerful base heater for IBCs.
- 2700 Watt heater.
- External DigiTherm digital controller for accurate temperature control.
- Dimensions: 1035 - 851 mm (fits a 1000L IBC).
- Materials: 100% silicone.
- 1,5 meter power cord with no plugs.
- Environment:
  - Heating element: -10-40°C - IP64 rated.
  - Digital Controller: -10-40°C - IP54 rated.
- Heats water from 15°C - 70°C in less than 40 hours in a fully loaded IBC Container.
- Combine with heating jacket or insulating cover and lid for optimal effect.

# IBC COVERS & INSULTATING JACKETS

IBC insulation jackets are designed to insulate and maintaining temperature inside an Intermediate Bulk Container (IBC).

Most of our insulation jackets can be used in conjunction with other IBC heaters to speed up the heating process and to slow down the cooling proces, after the heater is unplugged.

Our insulation jackets and covers are made from durable materials and are easy to install to an IBC for better weather resistance or for use in wet or dusty working environments.

## Ideal for:

- Maintaining temperature inside a container.
- Speeding up the heating process.
- Extra container protection.
- Safe container transportation.
- Protecting the content of the IBC from UV radiation.

All shown products are for 1000L IBCs. See our price list for other sizes and options.



15-1738

## IBC Lid with access hole

- Openings for easy access to IBC.
- Cordura material with Teflon coating.
- Water repellent.
- Chemical resistant.
- Standard Size: 1000L.



15-1738

## Deluxe Insulation Cover

- Insulating for maintaining temperature.
- Water repellent.
- Chemical resistant.
- Integrated lid.
- Strategically placed velcro access pads.
- Cordura materials with Teflon coating.
- 8mm (700g/m2) Polyester insulation.
- Can be used in conjunction with an IBC Base Heater and/or Internal IBC Heater.



11-9861E

## PVC Waterproof Cover

- 100% Waterproof.
- Produced in durable PVC materials.
- Welded seams for optimal waterproofing.
- Sized to also fit an IBC with a Heating Jacket for weather protection of the Heating Jacket.
- Can be used in conjunction with an IBC Heating Jacket, an IBC Base Heater, and/or an Internal IBC Heater.



15-1736

## Thermal Bubble Wrap Cover

- Protects IBC from overheating and sunlight when outside.
- Metallic aluminum inner- and outer.
- Bubble wrap foil interlayer.
- Top velcro pad for container access.
- Can be used in conjunction with an IBC Base Heater and/or Internal IBC Heater.

# IBC COVERS & INSULTATING JACKETS

IBC insulation jackets are designed to insulate and maintaining temperature inside an Intermediate Bulk Container (IBC).

Most of our insulation jackets can be used in conjunction with an IBC Heating Jacket or other IBC heaters to speed up the heating process. Adding an insulation jacket to a heater helps speed up the heating process and slows the cooling proces, after the heater is unplugged.

Our insulation covers are designed in durable materials and are easy to install to an IBC for better weather resistance or for use in wet or dusty working environments.

## Ideal for:

- Maintaining temperature inside a container.
- Speeding up the heating process.
- Extra container protection.
- Safe container transportation.
- Protecting the content of the IBC from UV radiation.

All shown products are for 1000L IBCs. See our price list for other sizes and options.



15-1740

## Full Insulation Cover

- Full cover with no openings.
- Insulating for maintaining temperature.
- Water repellent.
- Nylon materials.
- 8mm (700g/m<sup>2</sup>) Polyester insulation.
- Also fits standard pallets.
- Also available for 1250L and 640L containers.
- Can be used in conjunction with an IBC Base Heater.



15-1733

## Insulation Cover

- Full cover with strategically placed velcro access pads.
- Insulating for maintaining temperature.
- Water repellent.
- Nylon materials.
- 8mm (700g/m<sup>2</sup>) Polyester insulation.
- Also fits standard pallets.
- Also available for 1250L and 640L containers.
- Can be used in conjunction with an IBC Base Heater and/or an Internal IBC Heater.



13-1432

## Insulation Body Cover

- Insulating for maintaining temperature.
- Water repellent.
- Adjustable straps.
- Quick release buckles.
- Nylon materials.
- 8mm (700g/m<sup>2</sup>) Polyester insulation.
- Can be used in conjunction with an IBC Lid, an IBC Base Heater, and/or an Internal IBC Heater.



# IBC HEATING JACKET WARMUP TIME

This is an example of warmup times for IBC Heating Jackets with 1, 2, or 3 zones.

The test is done on a 1000 liter IBC filled with water, with a Heating Jacket plus an insulating lid. The controller was set at 90°C in all three tests.

Results may vary depending on the IBC content, the environment, wind and other factors.



IBC Container Heating Performance  
Contents: Water

